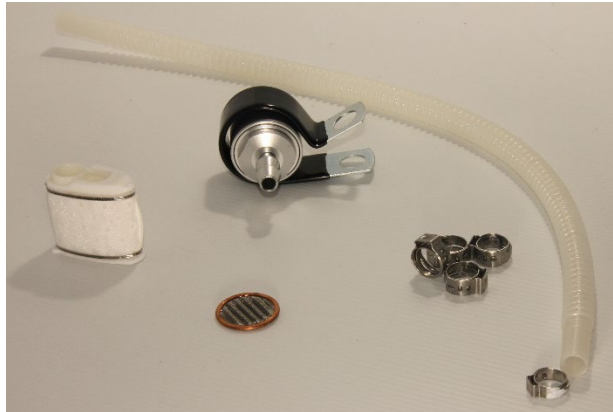


701/690 In Tank Fuel Filter Delete Kit

Link to web instructions

https://www.adventurebikecomponents.com.au/uploads/8/4/8/7/84870652/701-690_in_tank_fuel_filter_removal_kit.pdf



Fitting instructions

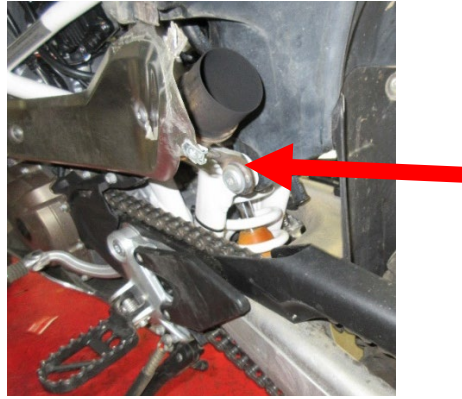
IMPORTANT SAFETY MESSAGE: Always ensure you have the mechanical capabilities to carry out work on fuel systems. All engine and exhaust parts should be at a temperature below 40 degrees before any work starts. Make sure there are no ignition sources nearby when work is being carried out.

The risk of injury increases during installation, if the exhaust is hot.

Ensure fuel tank is empty prior to start (no fuel present)

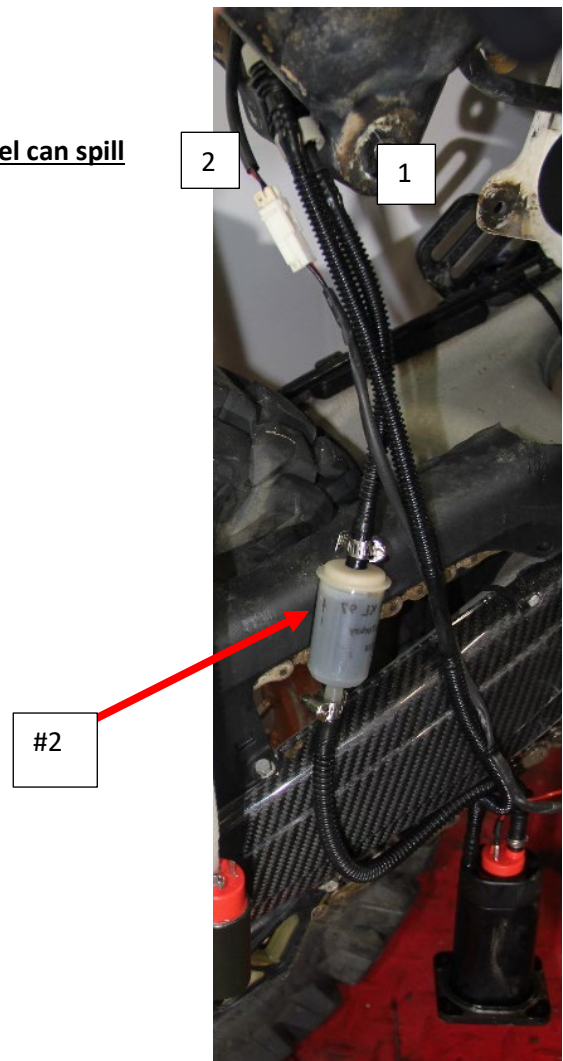
1. **Remove seat, side panels, racks, exhaust and air filter box**
2. **Remove bottom bolt from tank and lift tank**

701/690 In Tank Fuel Filter Delete Kit



3. Remove

- mudflap #1
- tank base plate bolts X4 #2 (caution fuel can spill when removing)



701/690 In Tank Fuel Filter Delete Kit

Slowly pull fuel pump and hoses out from tank

- Remove hose at point #1 and point #2.
- Clamps will need to be removed and some hoses may need to be cut to remove them.
- Remove the entire hose including filter
- Replace this hose with new hose supplied in kit
- Use clamp with white paint on it for connection #1



#1

4. Remove pump outer cover

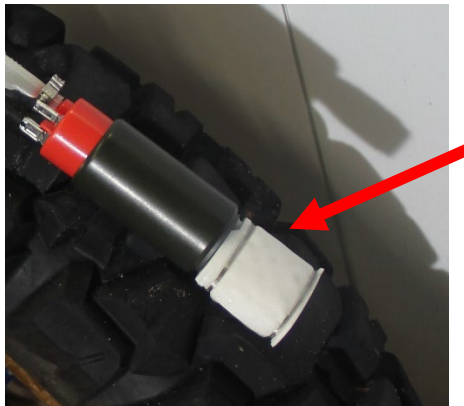
- By pushing tabs in and pulling down



701/690 In Tank Fuel Filter Delete Kit

5. Remove strainer from pump

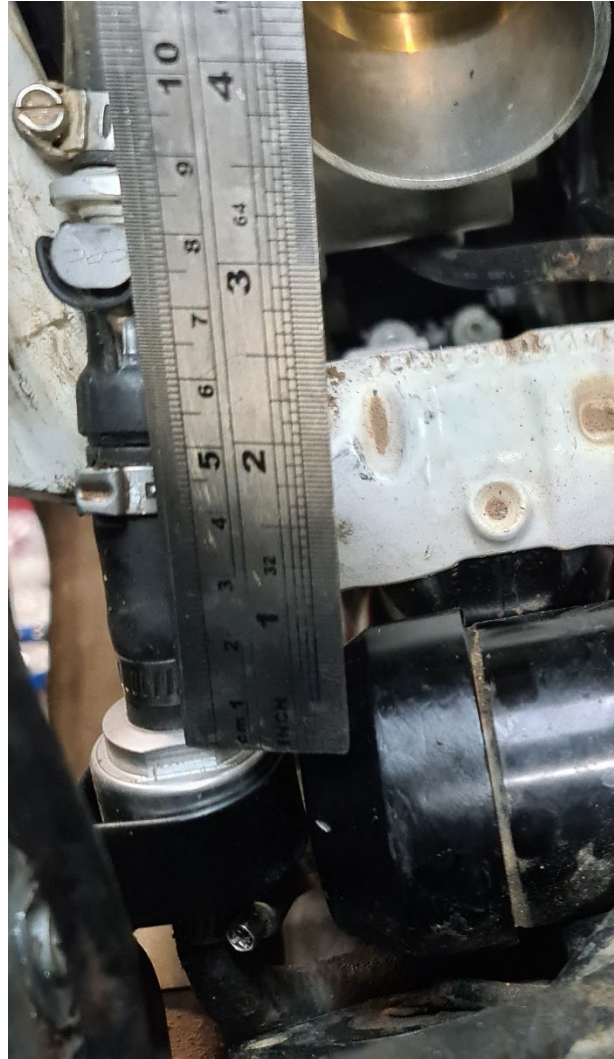
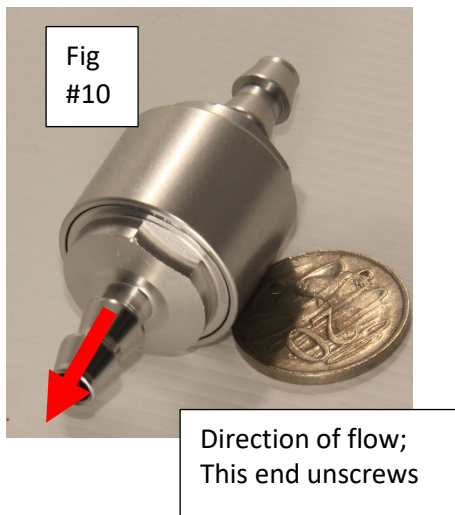
- Standard strainer is held by small clip inside strainer
- Install profill strainer, it just pushes on no clips



701/690 In Tank Fuel Filter Delete Kit

6. Fitting your filter

- You will need to cut the original fuel line 50mm back from the quick connect. **(use caution as if you pull hose hard you with snap connector on tank outlet)**
- Install aluminium filter (check it is screwed together firm first)
- Figure 10 shows direction to fit Filter.

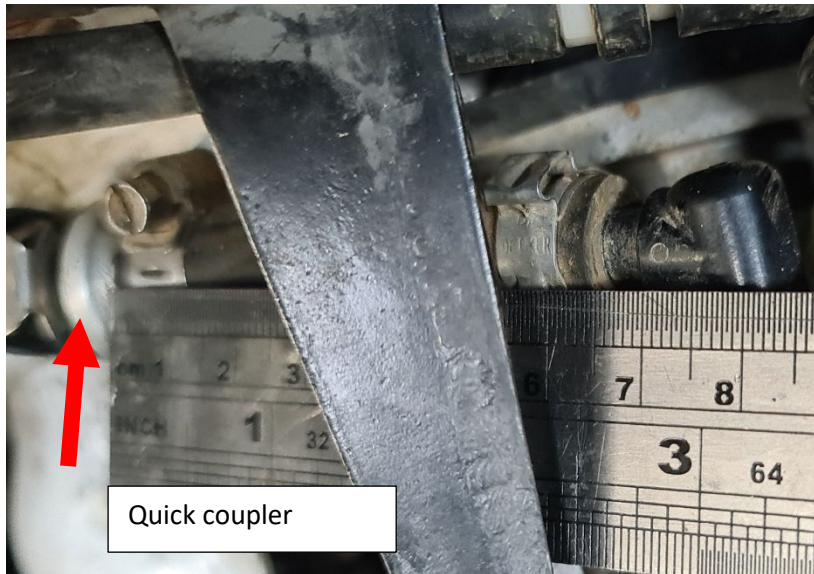


- Fit hoses to filter and mount using p clamp supplied. mounting using tank bolt that hold seat pull cable.



701/690 In Tank Fuel Filter Delete Kit

- Before hoses can be connected via quick couplers injector hose needs to be shortened.
- Remove quick coupler from injector hose.



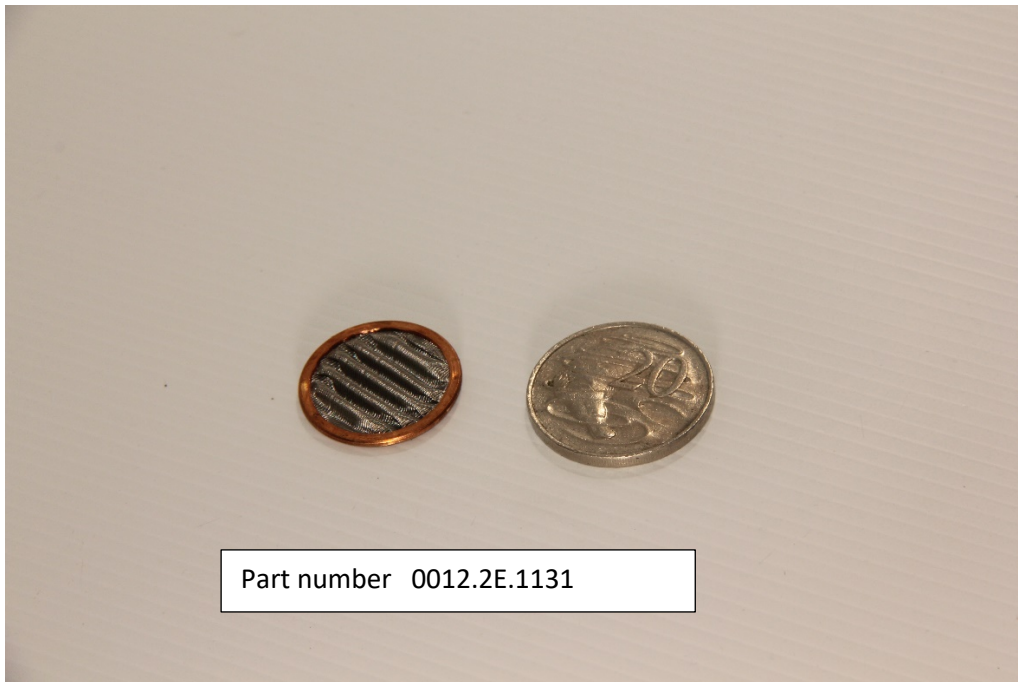
- Cut hose to 67mm of rubber hose. This allows for connection. **Caution plastic fitting injector end of hose**



701/690 In Tank Fuel Filter Delete Kit

7. Priming fuel system after reassembling and re-fuelling
 - Make sure quick connect fuel coupler is fully connected
 - Make sure run switch is turned on LH side handle bar
 - Turn ignition on for 15 seconds then turn off for 20 seconds
 - Repeat this 6 times
 - Check for any fuel leaks
 - Turn on make sure bike is in neutral, press starter button
 - Bike should start but may stop shortly after
 - Restart
8. Check over every thing to ensure you have tightened all parts before you go anywhere.

Filter should be cleaned every 5-10 thousand km but that is now easy you have a spare filter element so you can change out then order a new one.



If you are not confident that the job has been completed to the highest standard, **we strongly recommend** you get a licenced motorcycle mechanic to inspect your work prior to your ride.