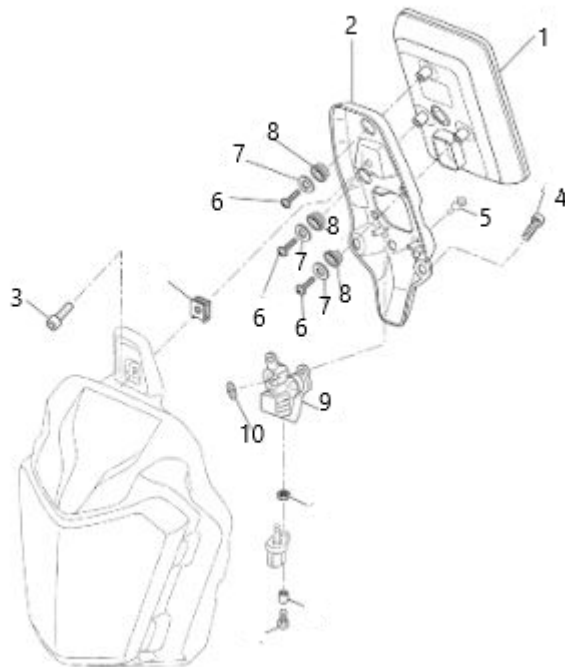


Adventure Bike Components

Yamaha Tenere 700 Dash Installation



- Always use Correct PPE
 - Remember many of the parts you are removing and reinstalling are easily broken if not managed correctly.
 - Disconnecting the battery can be a good idea when working on electrical items.
 - Ensure your bike is on a firm, level and stable surface prior to starting work.
1. Remove windshield
 2. Remove dash side panels (makes life easier)



3. Remove bolts #3,#4 & #5
4. Remove plug from rear of TFT display
5. Remove plug from #9 air temp sensor
6. Remove bolts #6 X 3 and remove TFT from mount
7. Remove rubbers #8 from mount.
8. Remove retainer #10 x 2 these will not be required on new mounting
9. Remove the spacers on #4 & #5 reuse these on new mount
10. Make sure you remove spacer under #3 these will be reused
11. Remove 6mm bolt from one end of the round cross bar

Adventure Bike Components

Yamaha Tenere 700 Dash Installation

Installation



When installing if the screw starts to squeak when winding in back it out, if you continue you will twist the thread insert out. A bit of lub can help when installing bolts

1. Install rubbers #8 x 3 onto new mount
2. Install #9 air temp sensor onto new mount using new m4 screws provided
3. push TFT display into rubbers #8
4. Refit screws #6 and washers #7 X 3
5. Install Garmin mount using M4 screws provided
6. Reinstall plugs in rear of TFT display and air temp sensor
7. Reinstall bolts #4 & #5 using the original spacers
8. Reuse original spacer for bolt #3 leave this in position
9. Fit front and rear sandwich plates using m4 screw supplied in bottom hole (don't tighten)
10. Spread the cross bar mounts and fit ABC brace in behind rear sandwich plates. Make sure spacer for bolt #3 is in place.
11. Refit the M6 screw and spacer into the end of the cross bar
12. Start top screws into ABC brace through sandwich plates on one side first (don't tighten)
13. Start top screws into ABC brace on through sandwich plate second side (don't tighten)
14. Start M6 x 30 countersunk screw with supplied washer fitted into centre of brace.
15. **Tighten all bolts, BE CAREFULL IF SCREW STARTS TO SQUEAK WIND BACK OUT AS IT IS NOT SQUARE. SOMETIMES A BIT OF LUB HELPS**

New mount is fitted now all you have to do is wire up your GPS and refit screen and side panels

Adventure Bike Components Yamaha Tenere 700 Dash Installation

Rear sandwich plates flat #2

Bottom hole with thread
insert



Countersunk M6
screw with washer

ABC Brace

Tapered front sandwich plates
#1



#2

#1